

## Fixing Size Issues on HRMS Screen Display

To begin-plug a mouse and keyboard into your pi.

### Step 1

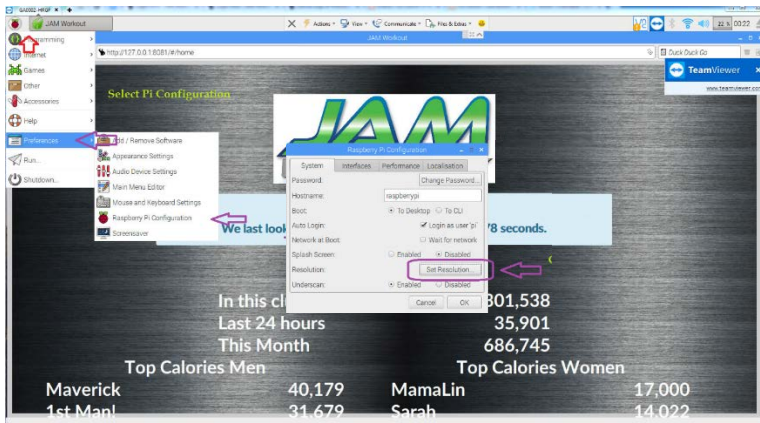


Press F11 Key to exit Full screen.

Click on Pi icon in top left corner.

Select preferences

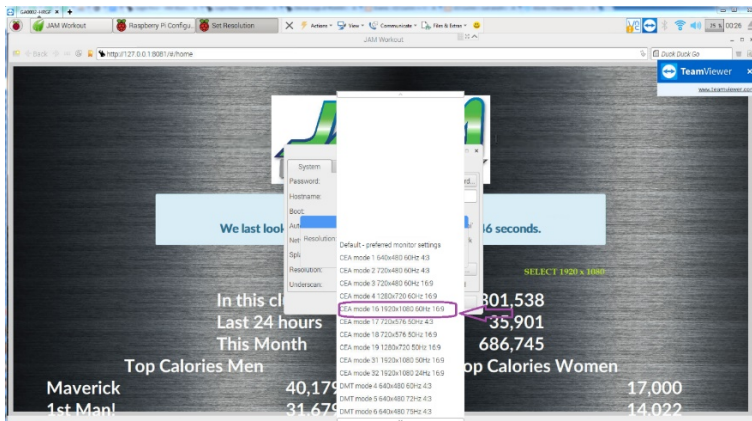
### Step 2



Select Raspberry Pi Configuration.

Click Set Resolution.

### Step 3

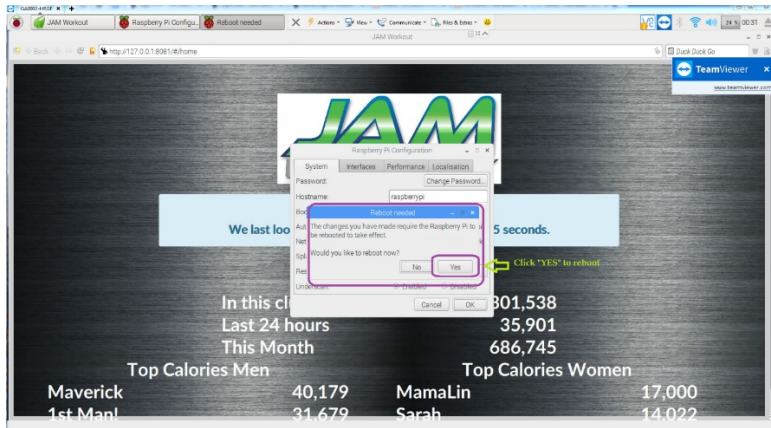


Click CEA mode 16 1920x1080 60Hz 169

Click OK

Then OK again to exit.

# Step 4



If prompted, select yes to reboot Pi.

That's it

JAM!